



Weighing groundnut fodder from joint experiment. Photo credits: Amagana Dijimé

Summary: The project aims to strengthen and support farmer-led research networks in which smallholders lead joint experimentation for agroecological intensification (AEI) building on local knowledge and innovation.

For more information see:
<https://www.ccrp.org/grants/farene-ii/>

West Africa Community of Practice

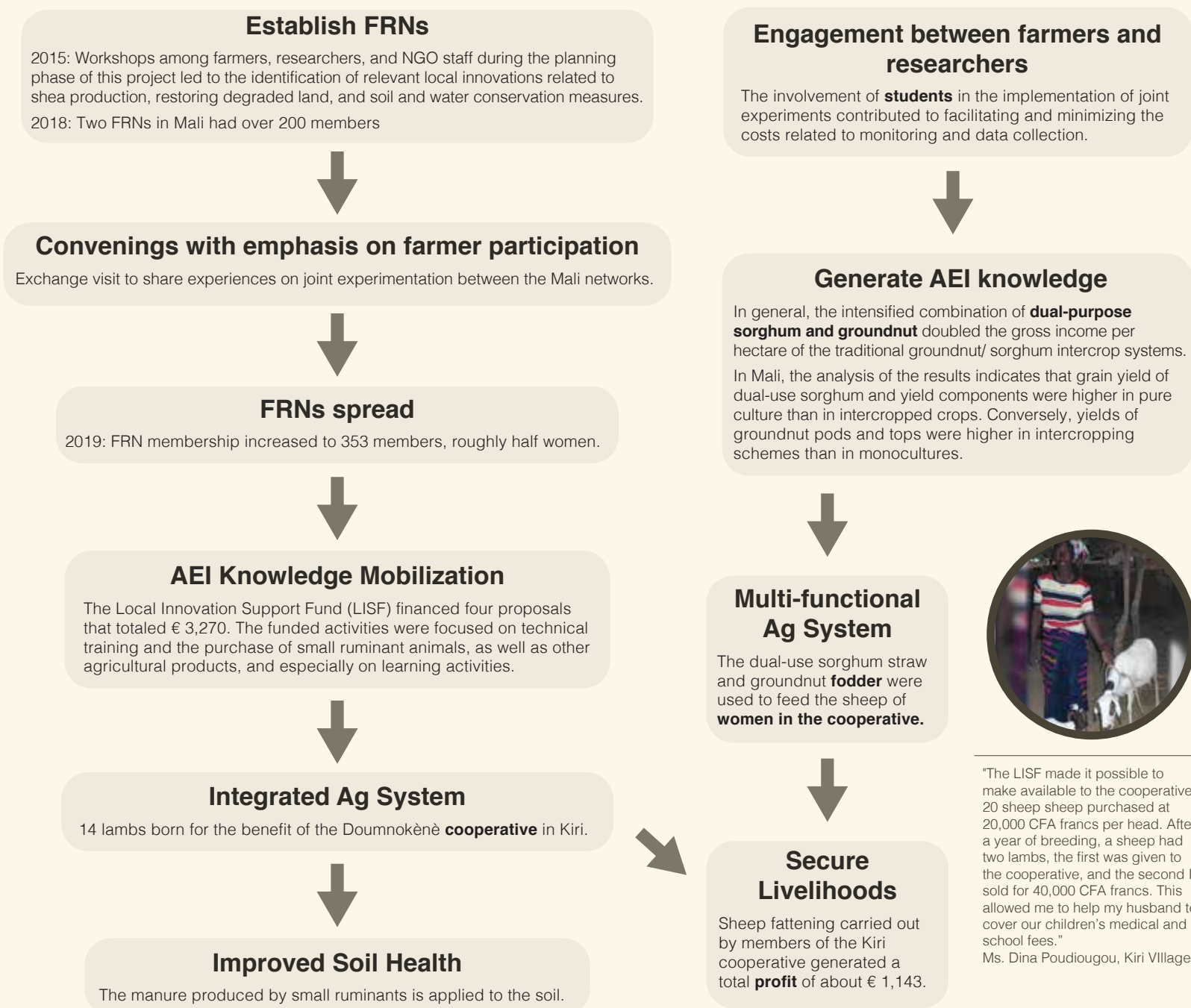


Project Partners

- ADAF Galle
 - World Neighbors
 - KIT/PROLIMNOVA
 - INERA
 - IER
 - AOPP
- Non-Governmental Organization ■ Farmer Organization
■ International Non-Governmental Organization ■ National Ag Research Center Organization

Research to Impacts Map: Farmer Research Networks (FRNs)

FaReNe Project 2015-2019



Establish FRNs

2015: Workshops among farmers, researchers, and NGO staff during the planning phase of this project led to the identification of relevant local innovations related to shea production, restoring degraded land, and soil and water conservation measures.
 2018: Two FRNs in Mali had over 200 members

Engagement between farmers and researchers

The involvement of **students** in the implementation of joint experiments contributed to facilitating and minimizing the costs related to monitoring and data collection.

Convenings with emphasis on farmer participation

Exchange visit to share experiences on joint experimentation between the Mali networks.

Generate AEI knowledge

In general, the intensified combination of **dual-purpose sorghum and groundnut** doubled the gross income per hectare of the traditional groundnut/ sorghum intercrop systems.
 In Mali, the analysis of the results indicates that grain yield of dual-use sorghum and yield components were higher in pure culture than in intercropped crops. Conversely, yields of groundnut pods and tops were higher in intercropping schemes than in monocultures.

FRNs spread

2019: FRN membership increased to 353 members, roughly half women.

AEI Knowledge Mobilization

The Local Innovation Support Fund (LISF) financed four proposals that totaled € 3,270. The funded activities were focused on technical training and the purchase of small ruminant animals, as well as other agricultural products, and especially on learning activities.

Multi-functional Ag System

The dual-use sorghum straw and groundnut **fodder** were used to feed the sheep of **women in the cooperative.**



Integrated Ag System

14 lambs born for the benefit of the Doumnokènè **cooperative** in Kiri.

Secure Livelihoods

Sheep fattening carried out by members of the Kiri cooperative generated a total **profit** of about € 1,143.

"The LISF made it possible to make available to the cooperative 20 sheep purchased at 20,000 CFA francs per head. After a year of breeding, a sheep had two lambs, the first was given to the cooperative, and the second I sold for 40,000 CFA francs. This allowed me to help my husband to cover our children's medical and school fees."
 Ms. Dina Poudiougou, Kiri Village

Improved Soil Health

The manure produced by small ruminants is applied to the soil.